

Power Supply Module CS-VPP-xx-xx

CS-VPP-xx-xx is used with the **CaterSense®** controllers to increase the VA output on a controller from 15VA upto 40VA depending on the power pack selected.

The power pack is available in two sizes 10 and 25VA in either PCB format or mounted within an enclosure with a 5Amp neon rocker switch.

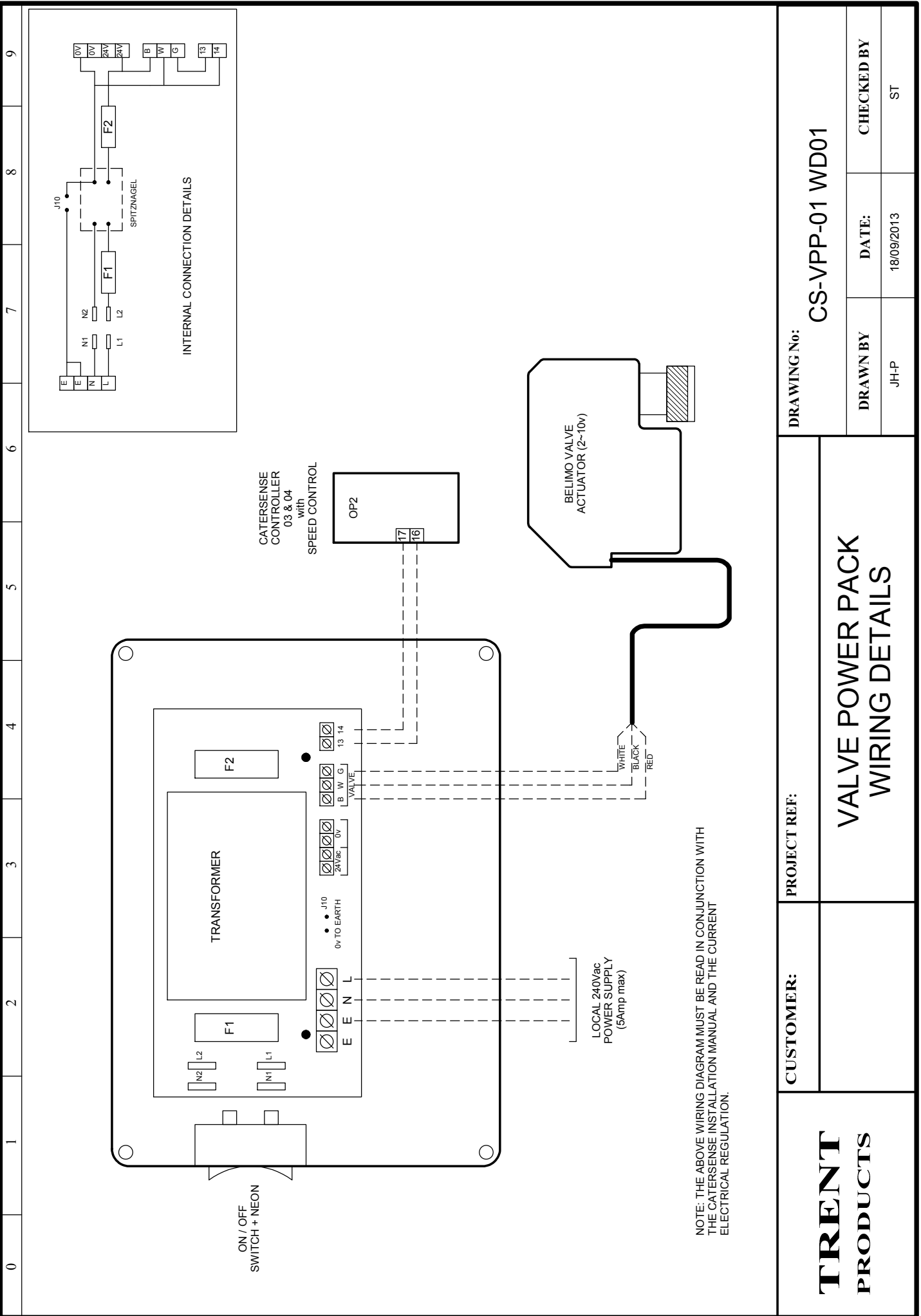
The 0v rail can be linked to Earth or let float.



| Model Type | Model | Description |
|-------------------------------|---------------------------|---------------------------------------|
| | CS-VPP-10-SW | 10VA Power Pack Module with enclosure |
| | CS-VPP-25-SW | 25VA Power Pack Module with enclosure |
| | CS-VPP-10-PCB | 10VA Power Pack Module - PCB |
| Technical Data | Power supply (primary) | 240Vac (fused) |
| | Power supply (secondary) | 24Vac (fused) |
| | VA Rating | 10 or 25 |
| Wiring Terminals | L | 240Vac Live |
| | N | Neutral |
| | E x 2 | Earth |
| | 24Vac x 2 | Multi terminal 24Vac supply |
| | 0v x 2 | Multi terminal 0Vac supply |
| Damper or 3 Port Valve | B = 24V W = 0v G = Signal | |
| VeroVent or CaterSense | 16 = Signal 17 = 0v | Controller connection |
| | J10 | Link 0v to Earth Jumper |



This symbol on this product or the package indicates that disposal of this product after its lifecycle could harm the environment.
DO NOT dispose of this product (or batteries if used) as unsorted municipal waste. It should be disposed by a specialised company for recycling.
This product should be returned to your distributor or to a local recycling service.
Respect the local environment rules.



NOTE: THE ABOVE WIRING DIAGRAM MUST BE READ IN CONJUNCTION WITH THE CATERSENSE INSTALLATION MANUAL AND THE CURRENT ELECTRICAL REGULATION.

| | | | |
|-----------------------|--|-----------------------|----|
| TRENT PRODUCTS | CUSTOMER: | PROJECT REF: | |
| | VALVE POWER PACK WIRING DETAILS | | |
| DRAWING No: | | CS-VPP-01 WD01 | |
| DRAWN BY | DATE: | CHECKED BY | |
| JH-P | 18/09/2013 | | ST |